

Same plus in a 1922 "Call"

Aug 11, 1923

# The Indo-China Mission

R. A. JAFFRAY.

## Cambodia Opened

It is eleven years since our work in Indo-China began. Our objective from the beginning has been, not only to reach the Annamese race, resident in the States of Annam, Tonkin and Cochin-China, but also the Cambodian race, who are of quite a different type, being akin to the peoples of India. Cambodia, though under the same French Colonial Government and a part of Indo-China, has been closed to us until now. Thank God at last this door has swung open as a result of the persistent "knocking" of prayer.

The story of the progress of the Indo-China Mission in a few words may be stated as follows: Commencing at Tourane, a seaport of Annam, we had barely made a start there and in Tonkin when the Great European War seemingly gave our work a serious setback. However, this eventually turned out to be a great victory for the Gospel. Before the armistice was signed, our work had been re-established, and since then wonderful progress has been made.

## Three New Stations

In addition to the work already opened in the states of Annam and Tonkin, the Alliance Mission turned its attention to the Southern state of Cochin-China. In the year 1918 the great metropolis of Saigon was opened as a station and during the next year ~~1919~~ <sup>two</sup> three new stations in Cochin-China have been opened, namely, Sadee, Cantho and Chaudoc, as well as five outstations.

## Pray for Cambodia

For some time the prayers of God's faithful people at Home have concentrated with us missionaries on the field for the opening of Cambodia. As the year 1922 closed, God graciously answered prayer. Mr. Irwin, the Sub-Chairman of our Indo-China Conference, had an interview with the French authorities at Pnom-penh, with the result that Rev. and Mrs. A. L. Hammond have been able to enter that capital city and commence work for Christ. May we

ask our friends at home to cease not in prayer for Cambodia. At this time we do not know of a single Cambodian who has a saving knowledge of our Lord and Saviour Jesus Christ.

## Satan's Captives

The people of Cambodia have been held firmly in the clutch of the devil for many centuries. The false doctrines of Buddhism have had full and undisputed sway. Think you, that now, after all these generations of superstition and heathenism, as soon as Christ, the True Light of Asia and the Light of the World is brought to these people, that Satan will meekly retreat at once without offering any resistance? By no means. We may expect a spiritual conflict. It is a significant fact that while among the Annamese the Roman Catholic Church has many converts, yet they have had little or no success among these bigoted Buddhist Cambodians. Thank God, we know there is a charm and a power in the blessed Name of Jesus and His pure Gospel, when preached to men of whatsoever nation or religion, that none can resist. If that wondrous Story of His dying love has not only touched, but broken our hearts, we will tell it to others so that their hearts too will be broken at His feet. It matters not how grossly superstitious, how bigoted and fanatical, how deeply sunken in sin and shame these people may be. Though their hearts may be as hard as flint, His love, His death-passion to save men can and will break the rebellious, stony heart and bring it penitent and contrite to the foot of the Cross.

## Pray for Hué

There is another general request for prayer that we would like to lay before our friends. As the new year dawns, it looks to us as though the door to another Capital city was about to open to us. We refer to Hué, the Capital of the State of Annam, where the King of Annam resides. Pray for us that our faith may accept the challenge, and that

we shall see this great and beautiful city opened to the Gospel. It seems that if we can gain an entrance here, that there is no city in all Indo-China that will be closed to us. To add Hue to our list of stations would be a great victory: almost as great a victory as the opening of Pnom-penh, the Capital of Cambodia.

## Pointing Forward

Looking at the progress of the work as a whole, the examination of a few facts and figures will be of interest. We remember years ago, when the late Dr. A. T. Pierson was one of the leading advocates of Foreign Missions in America, he used to say,—"Facts are the fingers of God." If so, the fingers of God are surely pointing us right forward in the conquest of the unreached lands of the world, and in the completion of our task to evangelize French Indo-China. The following table covering the past six years speaks for itself:

	1916	1917	1921	1922
Missionaries on the field .....	5	9	22	22
Stations .....	2	3	5	7
Out-stations .....	0	2	2	8
Christians .....	25	61	183	432
Baptisms (during one year) .....	18	21	79	248
Annamese workers employed .....	8	8	8	22
Students in Bible School .	0	0	16	26
Offerings of Annamese Church	\$20.00	\$50.00	\$300.00	\$521.00

From these figures may we make a few deductions and observations.

1. Our missionary staff has steadily increased and we thank God for every one of the missionaries that have come to us. The party of five for 1922 came out via France for the purpose of studying the French language there before reaching the field. Three ladies have arrived in Indo-China, but the two young men remained in France for further study and will come out to Indo-China next year. The three ladies are Miss Rollier, Miss King and Miss Harrison. Miss Rollier, whose native tongue is the French, and who has been fourteen years

over

in the Master's service in India, has come to help us in Indo-China. Her work will probably consist largely in assisting the others in their study of French, though we feel sure that she will have a blessed ministry also among the Annamese. Miss King was married to Mr. Hammond immediately on arrival on the field, and has already started in the newly opened work in Cambodia. Miss Harrison is pursuing the study of the language at Tourane.

### Steady Advance

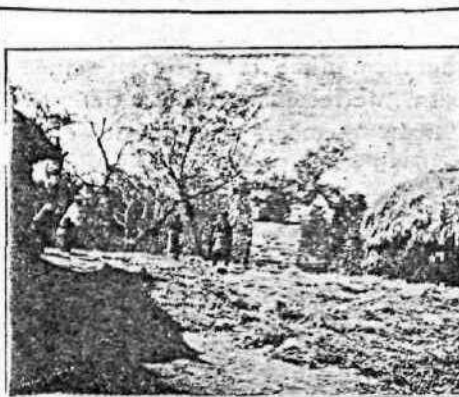
2. It will be noted that the number of our stations and out-stations has increased in proportion to the increase in the number of missionaries. We are seeking to press right forward in the occupation of this great field. We can go forward as fast as the Home Board can send us the missionaries. Our only question is whether we may not have advanced a little beyond what we will be able properly to hold when furloughs come due. Pray that we will be able to consolidate our advances and truly possess our possessions.

### Baptisms

3. The steady increase during the past few years, in the number of those who have been saved will be noted. The really remarkable increase, however, has been during the past year, 1922, when 248 souls were saved and received into the Church by baptism. This is more than three times as many as during 1921, and makes a total membership of 432 Annamese Christians. How we praise God for these brands snatched from the burning, these blessed trophies of His grace. They are only a few compared with the tremendous multitude still unsaved. But, thank God, they are living men and women, who know the saving and keeping power of Jesus, and who are impelled by His Holy Spirit to bear witness to their fellow Annamese what Jesus has done for their souls.

### A Difficulty

4. In the beginning of any work in a new field, one of the first and greatest difficulties is to secure anything like an adequate number of native workers to carry on the work. When the number of the converts is so small, there are so few from whom we may choose when we want workers. It is often not advisable to employ the early converts as workers. The work must wait till the missionary has learned the language more



### Before a Hindu Shrine

MRS. W. M. TURNBULL

Just a little shrine  
In a field:  
Heathen god—neither sun  
Nor a shield.

Just an idol shrine  
Not a throne,  
Nor a mercy seat,  
But a stone!

Came a widow child  
Weeping sore,  
Groaned a piteous sigh,  
Nothing more.

Came a Hindu maid  
Frail and small;  
Would the great god hear  
Her faint call?

Came a mother sad,  
Comfort none,  
As she healing sought  
For her son!

Came an aged crone  
Stooped and bent;  
Both her god and she  
Impotent!

Came a little lad  
Not alone,  
Taught to kneel before  
Lifeless stone!

Came a princely youth  
Custom bound,  
Thinking as he prayed,  
Useless round!

Came a father old,  
Nearly blind;  
Can a god of stone  
E'er be kind?

Just a little shrine  
Everywhere.  
Millions seek in vain.  
Do you care?

Doomed already they,  
Sinners lost.  
Christ the ransom paid;  
Wondrous cost!

perfectly, and the native worker is taught in the Word of God. We profited by experience in the Indo-China work and started our Bible School early in our history. For some years we had to struggle along with only a few Annamese workers, until there were enough converts to justify the opening of our Bible School. Now, beginning with 1922, when our Bible School began to produce workers, the number of our workers suddenly increases from eight to twenty-two.

### The Solution

The continual, never-ceasing cry of unreached, perishing millions in our ears made us feel that we dared not delay the opening of the new cities. Our missionaries could not open Stations however, without Annamese workers. We believe that we have been led by the Holy Spirit to adopt a plan in the training of our Annamese workers which has been helpful in two ways. Our Bible Course covers a period of three years. Less than this would not be a thorough training. Yet we could not afford to wait three years till these Annamese brethren had graduated before we commenced our work in the many needy cities that awaited our message of the Gospel. It was therefore decided that after the first year of study in the Bible School, our young men should go out into the work for a year of practical experience, associated with one of our missionaries. Thus at the end of the first year of Bible School work, practically the whole class of young men went forth as student-preachers. The increase and development of the work simply demanded this. They were sent forth however, with the distinct understanding that after one year's experience in the work, they should return to the Bible School to finish their three-year course. The next year, 1922, the Lord sent us a new and larger class of young men, as students in the Bible school. At the end of their first year of study they also will go forth and will replace the first-year men, allowing them to return to the Bible School for their second year, and so on.

### Practical Experience

The two benefits resultant from this plan are, first, we secure Annamese workers earlier than we otherwise could do, and thus can open new stations and win souls for the Master: and, second, the Annamese student according to this plan receives during his course of train-

ing not only the teaching of the Word of God while in School, but also practical experience in the work in the midst of his course. When he returns to his books for further study it is with a new purpose and zeal, and with a much better understanding of the actual needs of the work for which he is preparing. We now have **22** Annamese workers in the field, and **26** students in the Bible School. It is very encouraging to us that all of the young men who have gone forth for their first year's experience in the work are well reported of by the missionary with whom they have been working. The one difficulty connected with the plan outlined above is that the missionary finds the student-preacher so helpful, so almost indispensable in his work, that he is reluctant to see him return to the Bible School to continue his course! The students themselves are usually glad to return, and are anxious to win their diplomas.

#### Self-Support

5. The steady increase in the amount of the offerings of the Annamese Christians, toward the support of their own work is also encouraging. Last year **432** members gave their value of U. S. A. **\$521.00** to the work, an average of over

**Si.20** per member. The Conference has set for our Annamese Churches a scale to aid them in the matter of self-support. That is, we recommend that a Church of so many members shall at least contribute sufficient money to meet such and such needs. The scale leads right on until the Church is fully self-supporting. With hardly an exception our Annamese Churches are measuring up to the standard required and steadily climbing the scale.

The greatest benefit of self-support is not a financial one. It is rather a spiritual one. A self-supporting Church is almost sure to be a self-propagating Church. Thus 'from mouth to mouth and from heart to heart the glad Message of Jesus is passed on and spread far and near.

#### Finance

In closing this part of our Report we would like to remind our readers that Indo-China is a very expensive field. The cost of living rents, and the price of property all are very high. Thus as our work enlarges and develops the *cost of the enterprise* becomes much greater. We ask the earnest prayers of all our dear friends at Home to help us bear the heavy burden of the financial end of the Indo-China work.

A.W. The Indo China Mission - Jaffray  
page 382, 383, 384  
August 11, 1923